



Eco Slim Bulkhead

Parameters

Optical Parameters

CCT	2900-6500K
Lumen Output(lm)±5%	1920lm/1680lm/1000lm
Lumen Efficacy(LPS)±5%	120lm/W
LED Type/Qt'y	SMD40pcs
CRI/SDCM	>80/<6

Electrical Parameters

Rated Power(w)±5%	16W/14W/8W
Rated/Actual Input	180-240Vac
Driver Output Data	65Vdc/290mA
Power Factor/THD/PE	>0.7
Driver/Connection	Integrated
Over Load/Short Circuit	Protection
Hi-pot Test Range	NON Isolated driver, 1000Vdc/5mA/60S

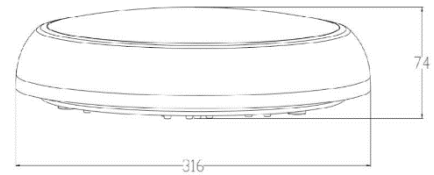
Life

Warranty	5 years
Lumen Maintenance 70%	40000hrs
LM80	97.34% lumen maintance@6000hrs

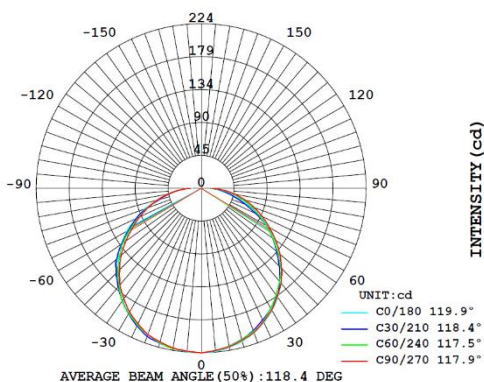
Others

IP/IK/Glow-wire	IP65/IK08/650°C
Temp./Humidity	Working:-20°C~45°C Storage:<70°C

Product Dimension



IK08   **IP65**



Height	AVR E	CENTER E	Diameter
1.50m	28.261x	99.581x	473.81cm
2.00m	15.901x	56.021x	631.75cm
4.00m	3.971x	14.001x	1263.49cm
4.50m	3.141x	11.061x	1421.43cm
6.00m	1.771x	6.221x	1895.24cm

Angle: 115.3deg

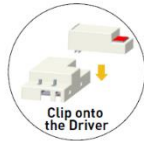
Quality LED Lighting

Clip & Play 2 in 1 On/Off & Corridor Function Microwave Sensor Pack

1



Microwave Sensor Pack Installation



2



Switch to Corridor Function Microwave Sensor

ON
OFF

1	2	3	4	5	Hold Time	Stand-by time
-	-	I	-	ON	30s	1min 20%
ON	-	II	ON	-	30s	10min 20%
-	ON	III	ON	ON	1min	5min 20%
ON	ON	IV	-	ON	3min	10min 20%
ON	ON	V	ON	ON	3min	Disable 20%

Switch to On/Off Microwave Sensor

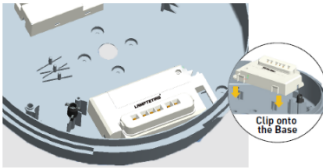
ON
OFF

1	2	3	4	5	Hold Time	Stand-by time
-	-	I	-	-	5s	0 -
ON	-	II	-	ON	1min	0 -
-	ON	III	ON	ON	10min	0 -
ON	ON	IV	ON	ON	10min	0 -

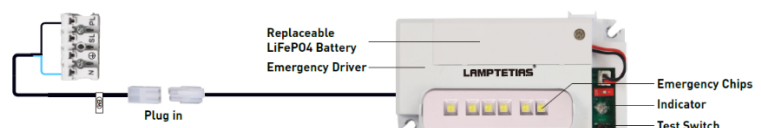
Same driver works with on/off microwave sensor & corridor function sensor

Clip & Play Emergency Pack

1



2



In a matter of seconds to plug the male connector from the emergency pack into the female connector of the push fit terminals

LiFeP04 battery, Emergency Driver, Indicator, and test switch are integrated - all in one pack