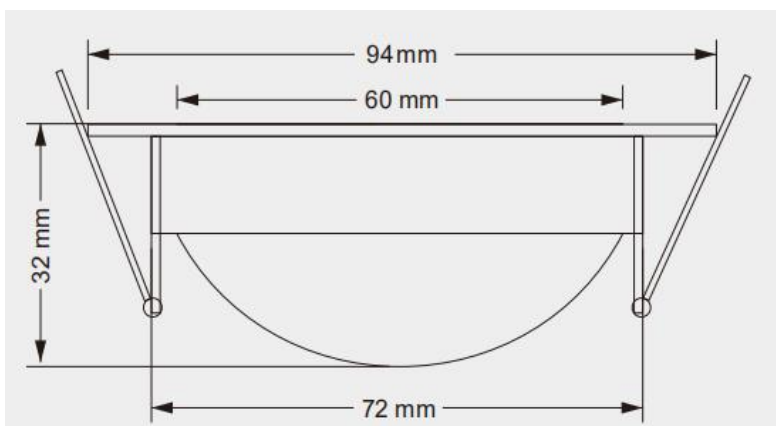


360 Degree Rotatable Fire Rated LED Downlight DL7WCCT Specification

Picture:



Drawing Size:



Features:

This 7W fire rated LED Downlight is fire-rated to 90 minutes, IP65 Waterproof, very low power consumption, Bridgelux COB LED chip inside, Dimmable Driver.

Technical Data:

Item No.:	DL7WCCT
LED Chip:	Bridgelux COB
Lamp Base:	6pole quick connector
Type:	Fire Rated LED Downlight
Weight:	300g
Dimension:	Ø94x32mm
Cutout Size:	75mm
Material:	Aluminum alloy + PC
IP Grade:	IP65
Power(W):	7W
Power Factor:	>0.85
Input Voltage:	AC220-240V 50/60Hz
Total Lumens:	700lm
CRI:	>80Ra
Dimmable:	Yes
Beam Angle:	60
Color Temperature:	Warm White(WW):2700K Nature White(NW):4100K Cool White(CW): 5500K
Packing:	1. 50pcs/CTN 2. Gross Weight: 15kg 3. Carton Size: 50x31x28cm

Quality Guarantee:

Certificate:	CE / RoHS / BS476-21:1987
Waranty:	5 years waranty
Aging Test:	48 working hours aging test

360 Degree Rotatable Fire Rated LED Downlight DL7WCCT Specification

Driver:

The 7W Fire Rated LED Downlight including a dimmable Driver proves the perfect power, It is compact size allows for easy installation, as does the 20cm flying leads,



LED Heat Sink:

The heat sink is designed to remain in free air, the fire rated LED Downlight can efficiently keep the LED Chip cool ensuring long life and ultimate light output, unlike other fire rated LED fittings where the heat sink is enclosed in a fire cowl or fire hood.

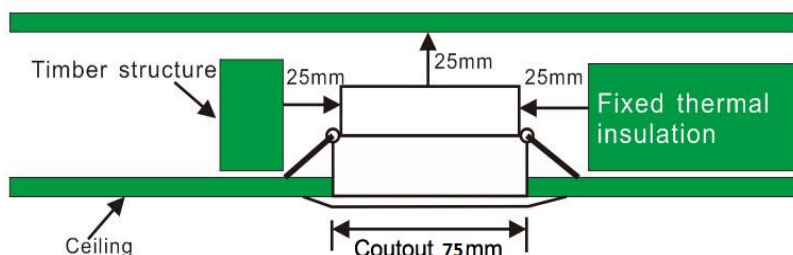
Fire Protection

At the heart of fire rated LED Downlight design is a Aluminum fire cowl patent system for efficiently transferring heat from

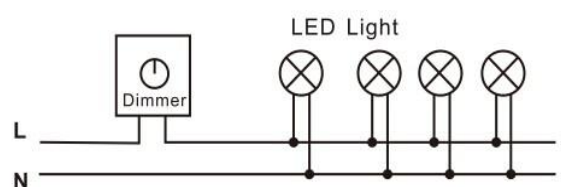
LED to heat sink, whilst ensuring that under fire conditions the fire rated ceiling is maintained for its full rated duration. No fire hoods required, saving installation time and cost, but still ensuring optimum cooling for the LEDs.

Installation:

Being a one-piece design, the fire rated LED Downlight is the easiest and most convenient means of installing downlights into a fire rated ceiling. The product dimensions have been specially designed to fit into a standard range of fitting hole size, allowing easy replacement of existing MR16 or GU10 Fittings.

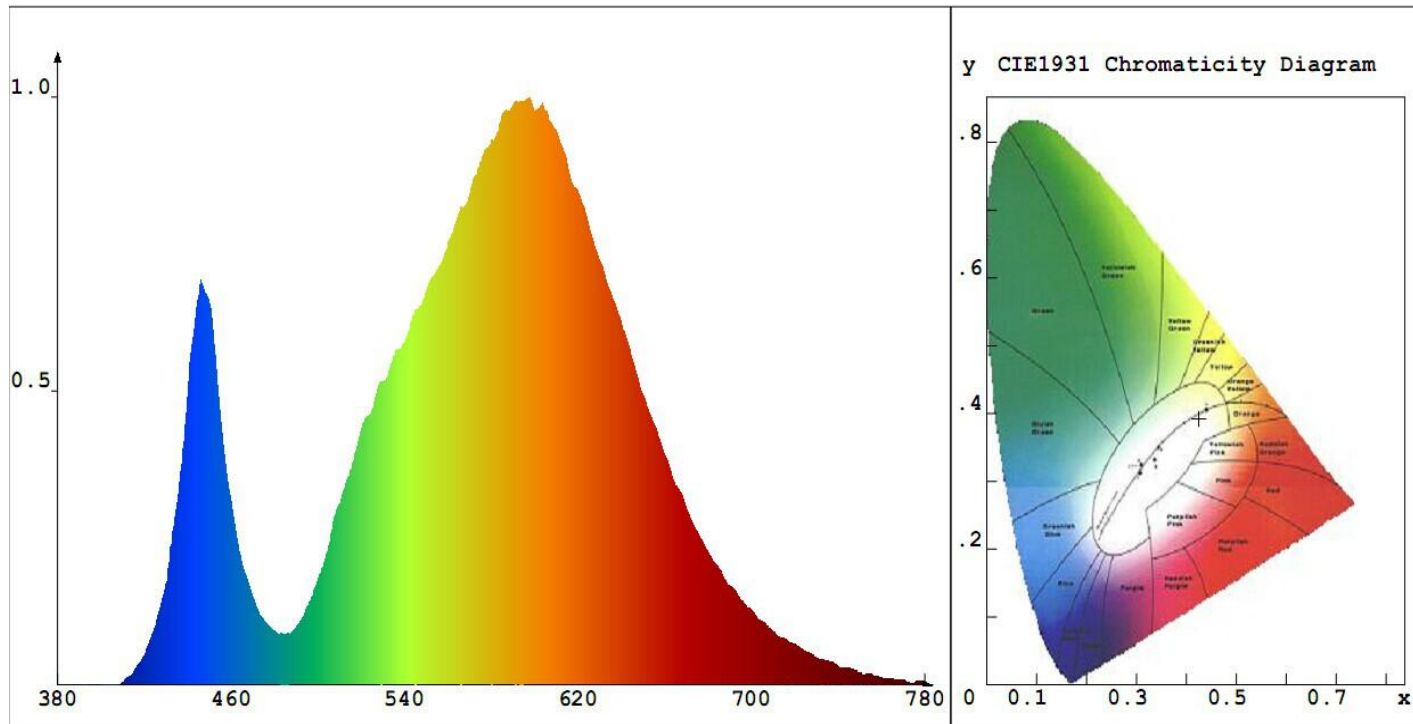


Wire diagram as following:



360 Degree Rotatable Fire Rated LED Downlight DL7WCCT Specification

Optical & Electrical Test Report



Chroma Parameters

Chro.Coord.: $x = 0.4255$ $y = 0.3926$ $u = 0.2481$ $v = 0.3434$

CCT: $T_c = 4126K$ Dominant Wave.: 584.6nm Purity: 45.5%

R ratio: $R = 21.1$ Peak Wavelength: 597.8nm Half Width: 122.1nm

Rending Index: $R_a = 83.2$

$R_1 = 81.0$ $R_2 = 82.3$ $R_3 = 91.0$ $R_4 = 79.8$ $R_5 = 79.1$ $R_6 = 84.0$ $R_7 = 85.4$

$R_8 = 79.6$ $R_9 = 8.9$ $R_{10} = 67.8$ $R_{11} = 74.7$ $R_{12} = 79.4$ $R_{13} = 78.0$ $R_{14} = 94.6$

Photo Parameters

Flux: 766.80lm Efficiency: 106.5lm Radiant Power: 2959.2mW

Ele. Parameters

Voltage: $U = 230.0V$ Current: $I = 0.35A$

Power: $P = 7.2W$ Power Factor: $PF = 0.885$

Instrument state

IntgTime: 110.041ms $V_{peak} = 13955$ $V_{dark} = 1426$

Scan Range: 380-780nm

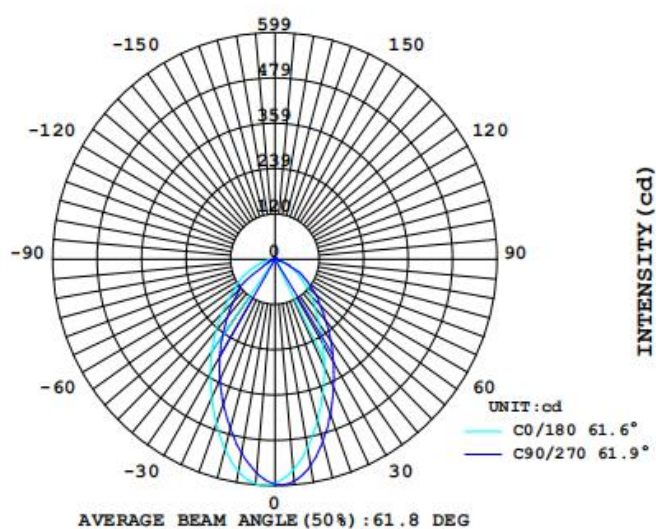
360 Degree Rotatable Fire Rated LED Downlight DL7WCCT Specification

Luminaire Photometric Test Report

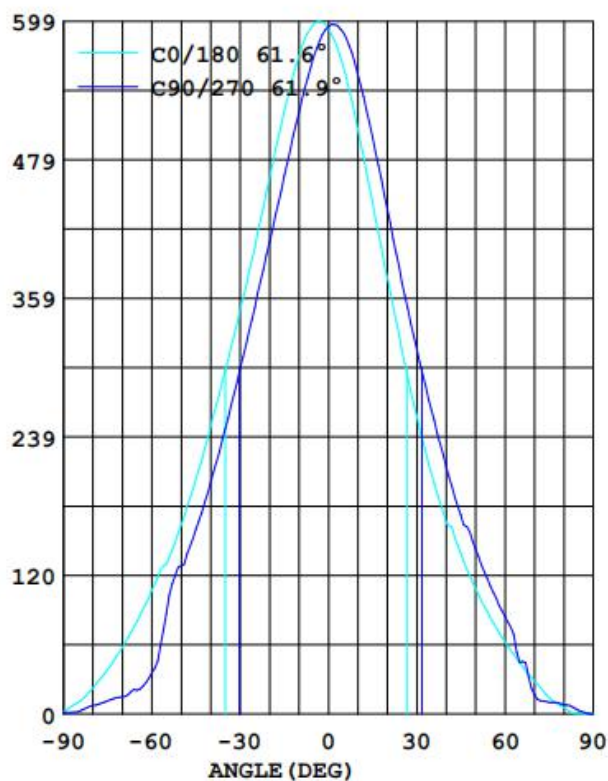
Data of Lamp		Photometric Data			
Model	DL7WCCT	I _{max} (cd)	1163	S/MH(C0/180)	1.16
Mominal Power(W)	7	Efficiency(%)	106	S/MH(C0/270)	1.13
Rated Voltage(V)	230	Total Flux(lm)	766	η UP(C0-180)	
Nominal Flux(lm)	700	CIE Class	Direct	η DN(C0-180)	
Lamps Inside	1	η up(%)	0	η UP(C180-360)	
Test Voltage(V)	230	η down(%)	93	η DN(c180-360)	

Luminous Intensity Distribution

LUMINOUS INTENSITY DISTRIBUTION

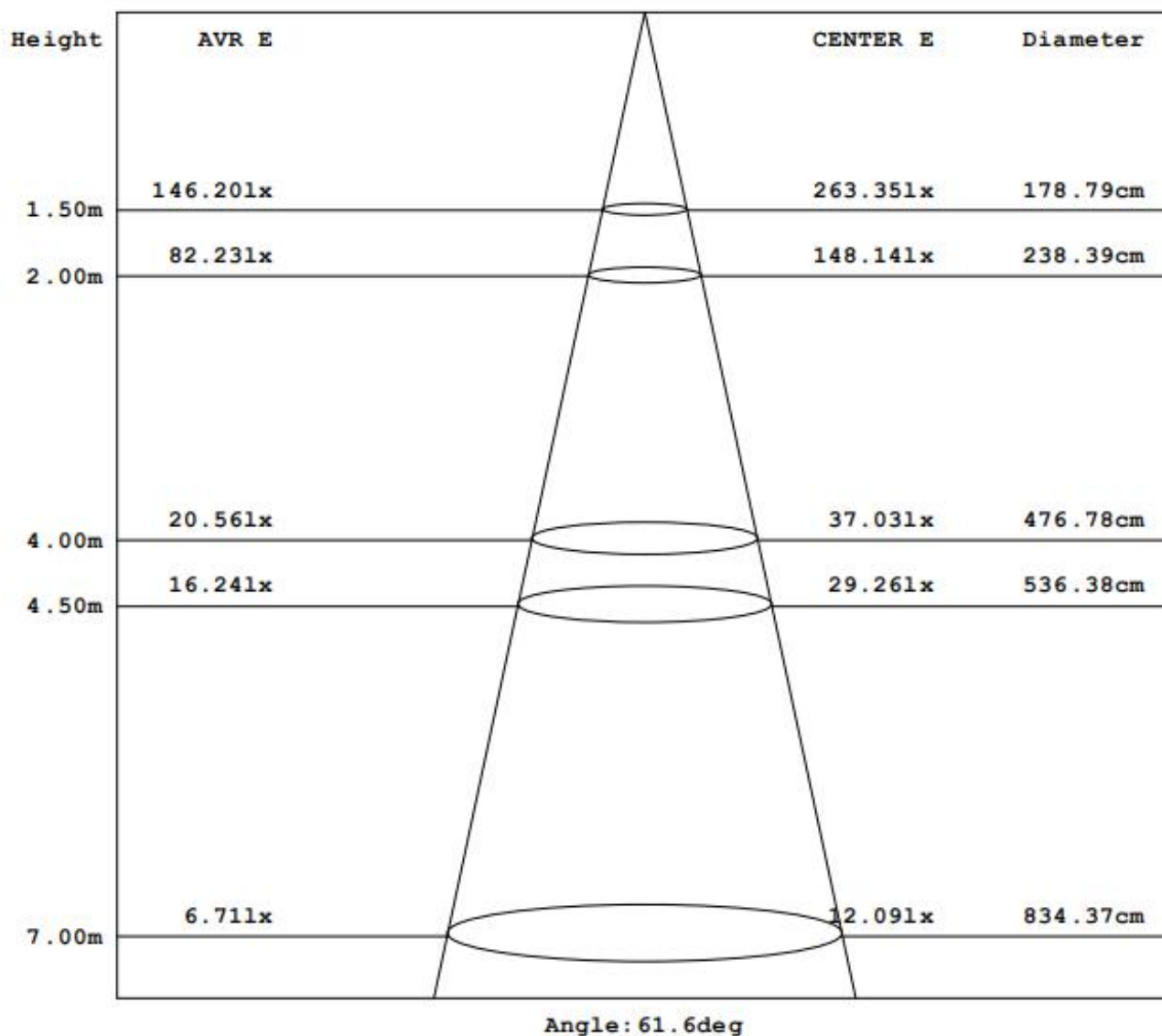


LUMINOUS INTENSITY DISTRIBUTION



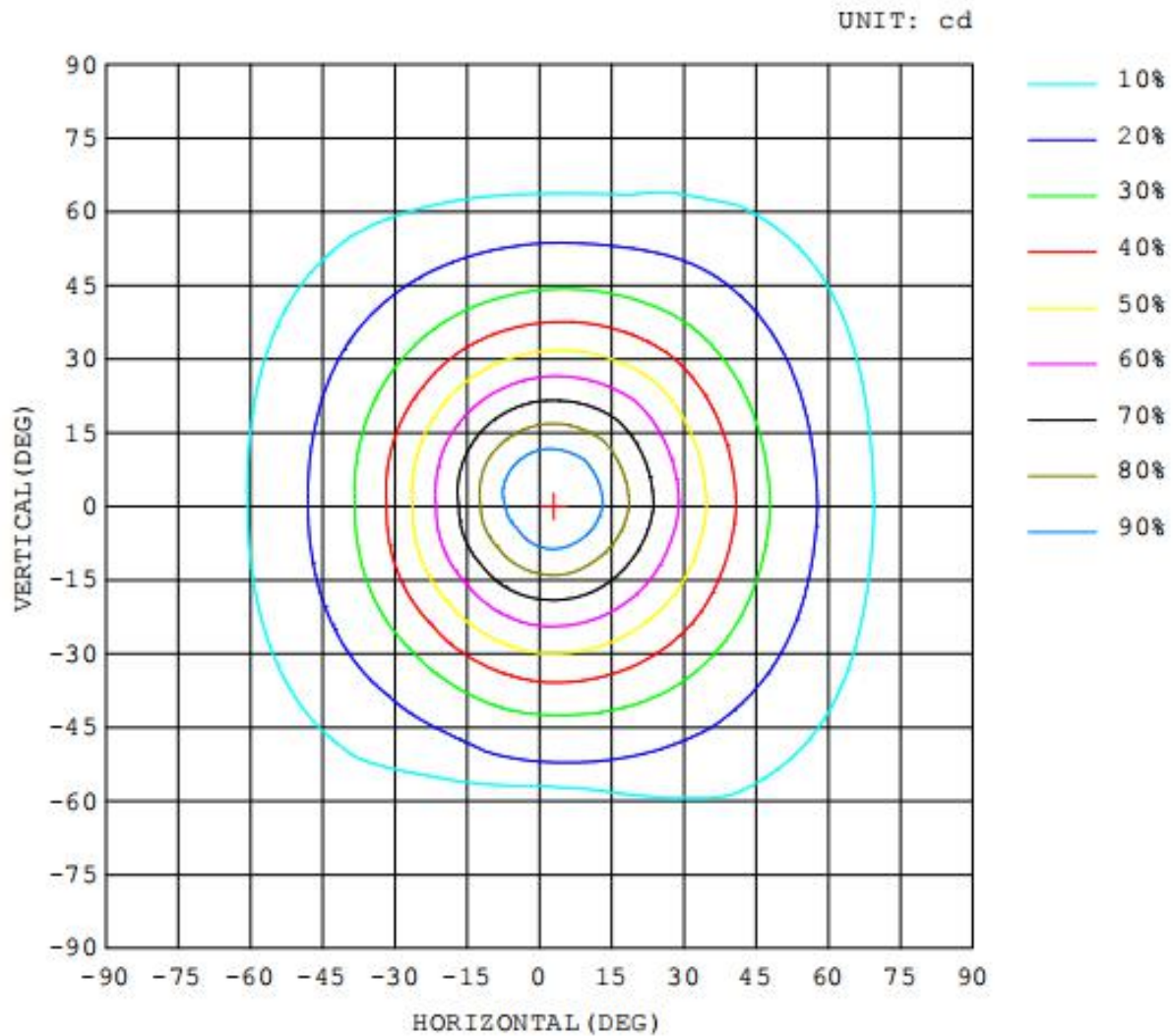
360 Degree Rotatable Fire Rated LED Downlight DL7WCCT Specification

Average E Figure



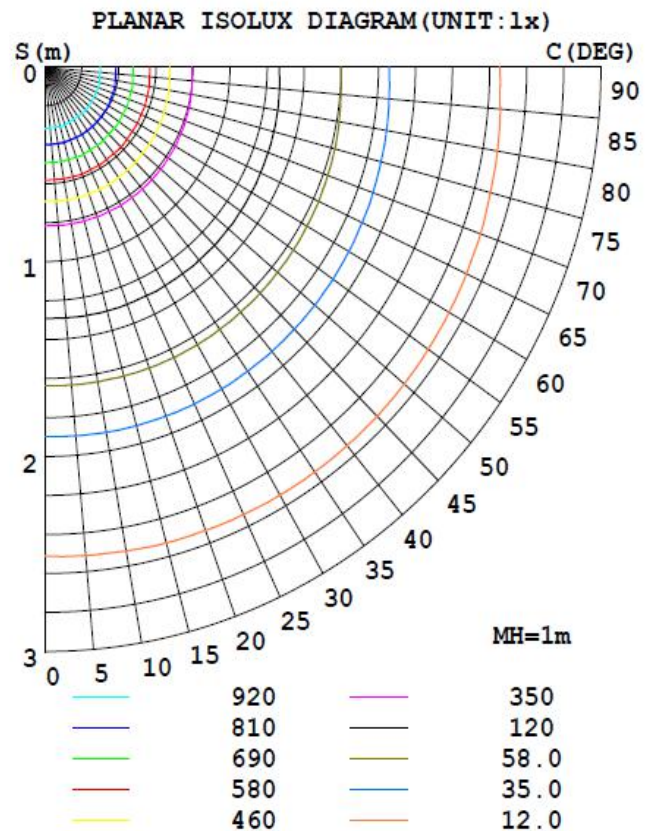
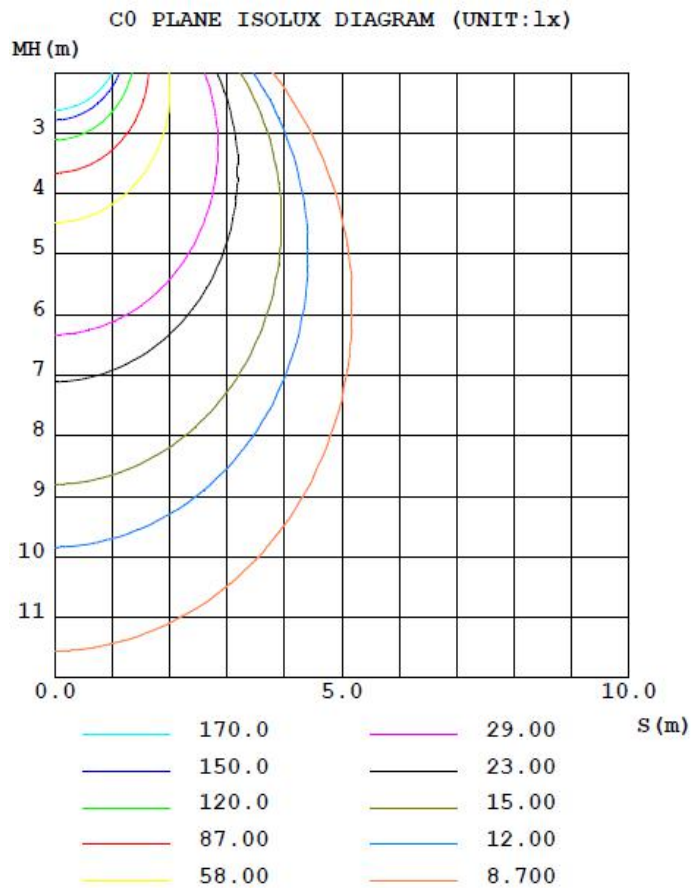
360 Degree Rotatable Fire Rated LED Downlight DL7WCCT Specification

ISOCandela Diagram



360 Degree Rotatable Fire Rated LED Downlight DL7WCCT Specification

ISOLUX Diagram



360 Degree Rotatable Fire Rated LED Downlight DL7WCCT Specification

Luminous Distribution Intensity Data

C (DEG) γ (DEG)	C (DEG)							
	0	45	90	135	180	225	270	315
0.0	593	595	594	590	593	595	594	590
5.0	596	584	568	553	560	576	589	596
10.0	568	544	520	501	505	531	552	568
15.0	521	490	465	443	443	470	499	520
20.0	463	431	407	381	377	407	436	465
25.0	403	374	351	321	314	342	373	404
30.0	349	319	299	266	258	281	316	345
35.0	297	268	246	214	208	230	263	292
40.0	247	221	199	169	166	184	213	241
45.0	204	182	160	140	139	146	172	193
50.0	163	153	128	108	108	123	143	155
55.0	129	120	86.6	82.4	83.0	96.2	110	128
60.0	107	92.1	35.3	61.4	62.4	73.7	84.5	101
65.0	80.0	67.2	20.5	43.1	44.1	54.7	44.3	76.5
70.0	57.2	45.9	14.5	27.3	28.2	37.4	16.8	55.2
75.0	38.7	29.2	11.5	13.5	14.2	22.3	10.0	37.2
80.0	22.6	14.2	7.40	5.01	5.45	10.1	8.11	22.0
85.0	10.0	2.88	1.90	0.09	0.13	2.12	2.92	10.0
90.0	2.43	0.31	1.19	0.13	0.18	1.28	0.00	2.39
95.0	1.33	0.22	1.15	0.22	0.31	1.24	0.13	1.28
100.0	1.24	0.18	1.10	0.31	0.40	1.19	0.18	1.24