



Greenlamp
LED RETROFIT LAMPS

LED Cabinet light

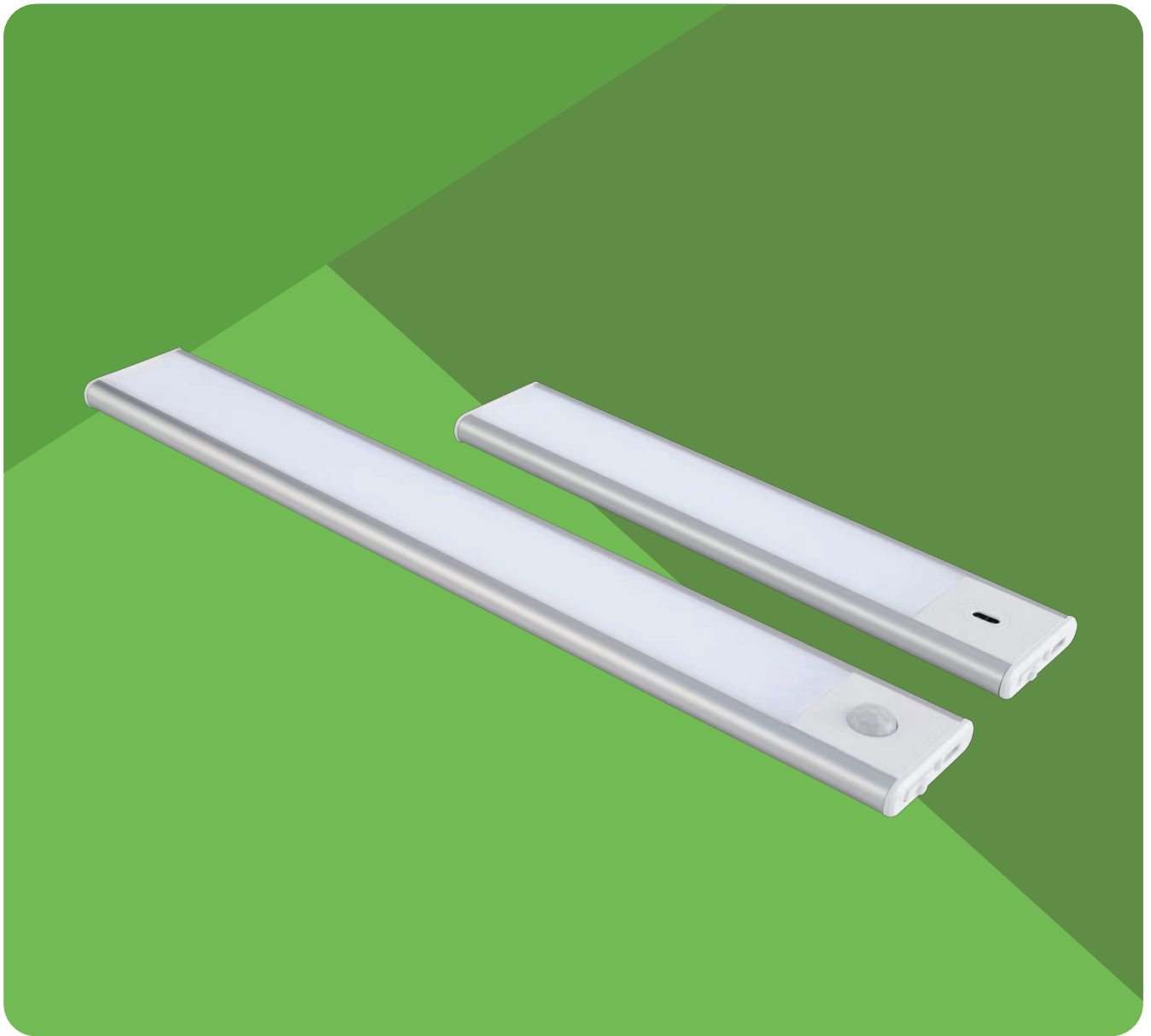
1W/2W/3W

Magnetic mounting

3CCT

PIR

LED Cabinet light



PRODUCT FEATURES

- 3CCT available, you can choose the led color you need
- IP20 LED Cabinet light With sensor
- Magnetic installation

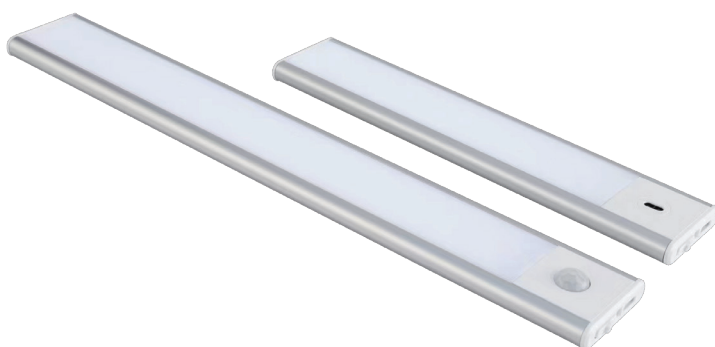
LED Cabinet light

LUC1WCCT

Specifications

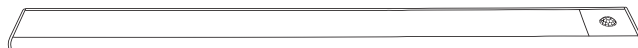
Electrical Data

Wattage	1W
Voltage	DC 5V
LED	62PCS/1C62B



Optical Data

Color temperature	3000/4000/6500K
Working current	200mA
Detection angle	120°
RA	>80
PF	>0.9



Others

Material	Aluminum +PC
Working Temperature	-20°C – 50°C
Size	230*40*9MM
Warranty	2 years



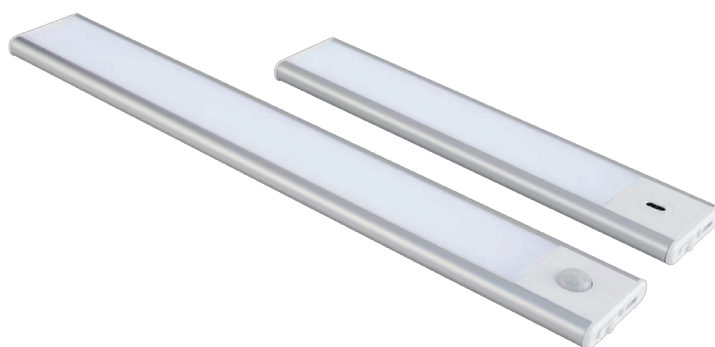
LED Cabinet light

LUC2WCCT

Specifications

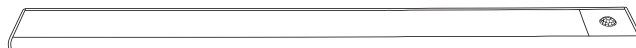
Electrical Data

Wattage	2W
Voltage	DC 5V
LED	120PCS/1C62B



Optical Data

Color temperature	3000/4000/6500K
Working current	200mA
Detection angle	120°
RA	>80
PF	>0.9



Others

Material	Aluminum +PC
Working Temperature	-20°C – 50°C
Size	400*40*9MM
Warranty	2 years



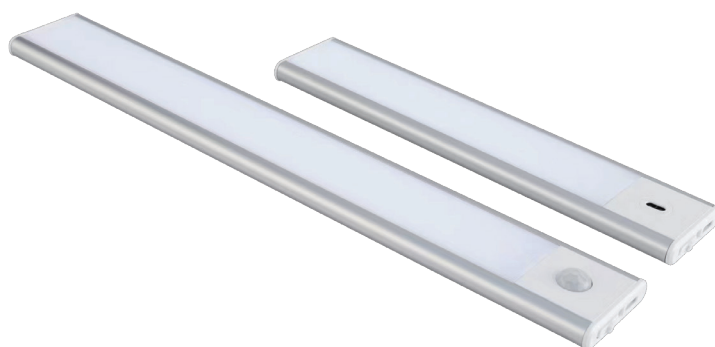
LED Cabinet light

LUC3WCCT

Specifications

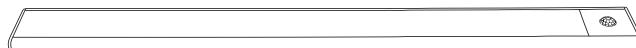
Electrical Data

Wattage	3W
Voltage	DC 5V
LED	186PCS/1C62B



Optical Data

Color temperature	3000/4000/6500K
Working current	200mA
Detection angle	120°
RA	>80
PF	>0.9

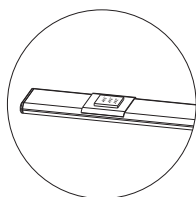


Others

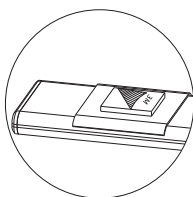
Material	Aluminum +PC
Working Temperature	-20°C – 50°C
Size	600*40*9MM
Warranty	2 years



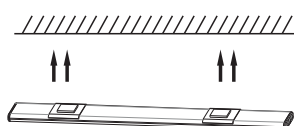
LED Cabinet light



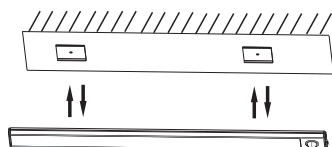
1. Paste the double-side tape to the back of the metal clip.



2. Peel off the protective films on the double-side tape.



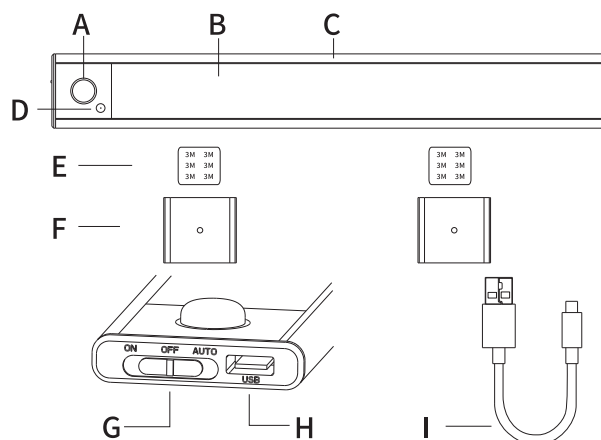
3. Attach the cabinet light with metal clips to the surface of the target position.



4. After installation, the light is magnetically attached on the metal clip and can be took off at any time.

Tips:

1. The cabinet light can be directly fixed on the surface of an iron product.
2. If the light is idle for a long time, please charge it at least once every three months for the sake of a longer battery service life.
3. The built-in magnets are placed at the end of the cabinet light.
(About 0.78inch away from the charging port)



PART	DESCRIPTION
A	Motion Sensor and Indicator
B	LED Light
C	Aluminum Body
D	CCT and Dimmable Button
E	Double Side Tape
F	Metal Clip
G	ON- OFF-AUTO Switch
H	Charging Port
I	USB Charging Cable

Warning

- Please fully charge the light before using it for the first time, otherwise the light may not work well because of the circuit protection. The protection is automatically release after charging
- Do not use the light under high temperature and humidity.
- The light source and battery of the product are irreplaceable. After a long time of use, when the brightness of the light is very lower or the power usage duration becomes shorter under normal usage, the whole light shall be replaced.

Warranty

2 years warranty for original purchaser of LED product that is identified on seller's invoice reflecting its original purchase(the "Product")

- The following circumstances will not be warranted :
- Damage caused by force majeure such as war, riots, sabotage, cyclones, earthquakes, tidal waves, flooding, fire, lightning strikes etc.
- Damage caused by user's improper delivery. defects caused by wrong operation, wrong treatment and destruction of machinery
- Damage caused by buyer or installer using bad quality cable or other mismatching electronic parts.
- With the quality problem during warranty time , our company will choose to repair / replacement parts , or replace the product , or other methods to solve them . Beyond the warranty time , will take some materials costs , labor costs.