



VOLTRON

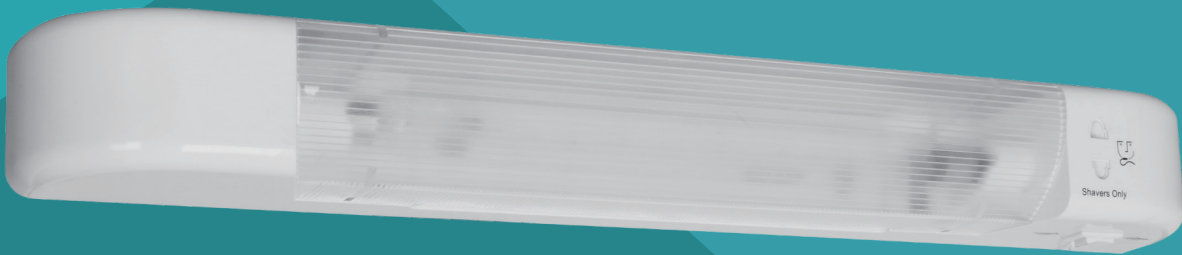
LED Shaver light

110/240V VOLTS

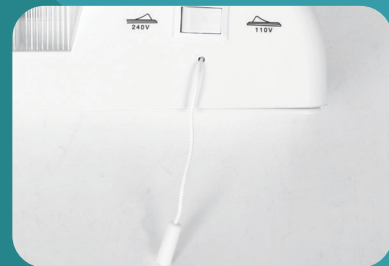
Shaver Socket

With Pull Switch

LED Shaver light



Shaver Socket
Both UK and Eu plug can be used



Light Base
With Pull Switch

PRODUCT FEATURES

- Easy to replace the lamp
- Dual Voltage operation
- Shaver socket built into the unit
- The lights can be used under bathroom mirror

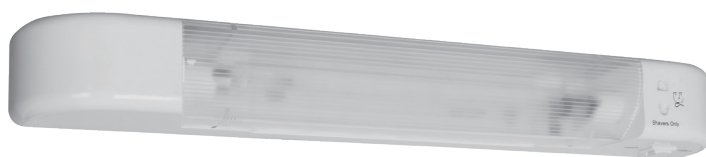
LED Shaver light

SL5WLEDWH

Specifications

Electrical Data

Wattage	5W
Voltage	AC240/110V Dual voltage
Housing	WHITE



Optical Data

Color temperature	3000K
Lumen	450Lm
Detection angle	120°
RA	>80
PF	>0.9

Others

Material	PC
Working Temperature	-20°C – 45°C
Size	495*58*72mm
Warranty	2 years



LED Shaver light

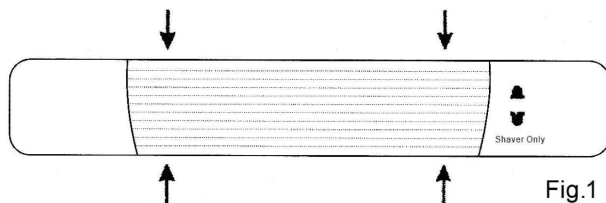
Warning

- It should be by professional electrician technician to install the product , inspection , maintenance and rack-mounted.
- Before installing fixtures , make sure the power is turned off during the installation process.
- Make sure the circuit voltage is in the lamp operation voltage allowable range
- If the external flexible cable or cord of the luminaire is damaged, it should only be replaced by the qualified person.
- Lamp should working under the predetermined working temperature .
- These products should be connected to a lighting circuit or fused at a maximum of 5 lamps.
- The transformer incorporated in these products has an isolating, 20VA loading and an output of 240V and 110V on the dual voltage version and 240V on the single.

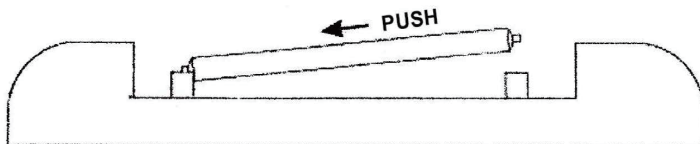
Installation Instructions

These Units must be mounted horizontally on a vertical surface. Please read the instructions fully before installation

1. Remove the diffuser by gently pressing the sides at the points indicated, in Fig.1 and lift out.



2. Remove the lamp by pushing in at one end and removing it from the sockets.



3. Using the back plate of the shaver light as a template mark the fixings in the required position on the wall and drill fixing holes accordingly.
4. Connect the cable by passing through the center hole in the back plate and follow the codes as listed: Live(L) = Brown or Red, Neutral (N) = Blue or Black, Earth (E) =Green /Yellow or bare conductor (which should be sleeved). Conductor size 0.5mm to 1.5mm solid or stranded, ensure that no strands of cable are visible outside of the connector.
5. Place shaver light into position with back plate secured back and screw into wall with appropriate screws through the holes in the base of the unit.
6. Replace the lamp and diffuse, please note the lamp will not work unless the diffuser is fitted back properly.
7. Switch back on the mains supply and the shaver light is now ready for use. Before plugging in the shaver, select the correct output voltage with the switch provided (Dual voltage version only)

Warranty

2 years warranty for original purchaser of LED product that is identified on seller's invoice reflecting its original purchase(the "Product")

- The following circumstances will not be warranted :
- Damage caused by force majeure such as war,riots,sabotage,cyclones,earthquakes,tidal waves, flooding,fire,lighting strikes etc.
- Damage caused by user's improper delivery.defects caused by wrong operation,wrong treatment and destruction of machinery
- Damage caused by buyer or installer using bad quality cable or other mismatching electronic parts.
- With the quality problem during warranty time , our company will choose to repair / replacement parts , or replace the product , or other methods to solve them . Beyond the warranty time , will take some materials costs , labor costs.